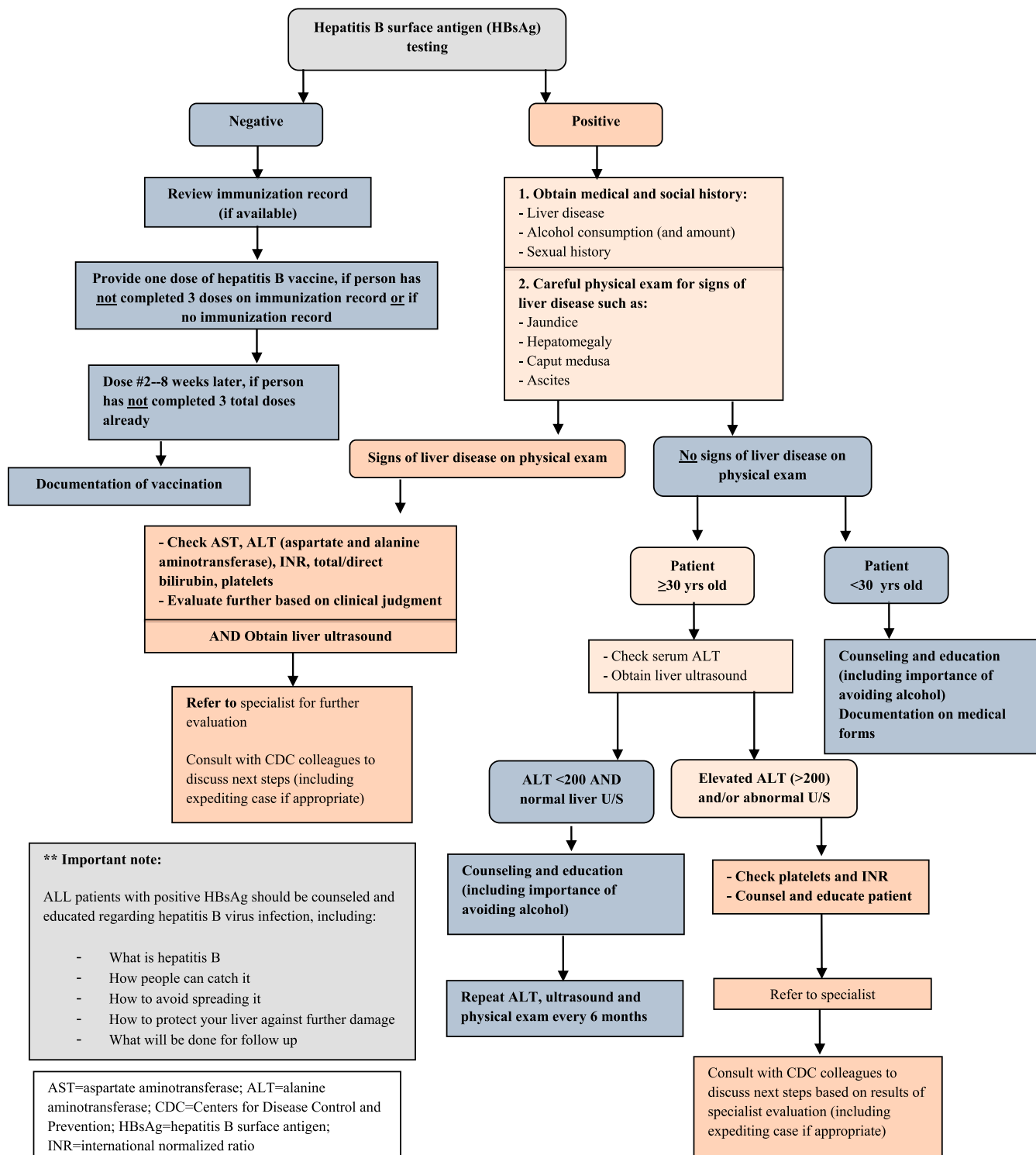
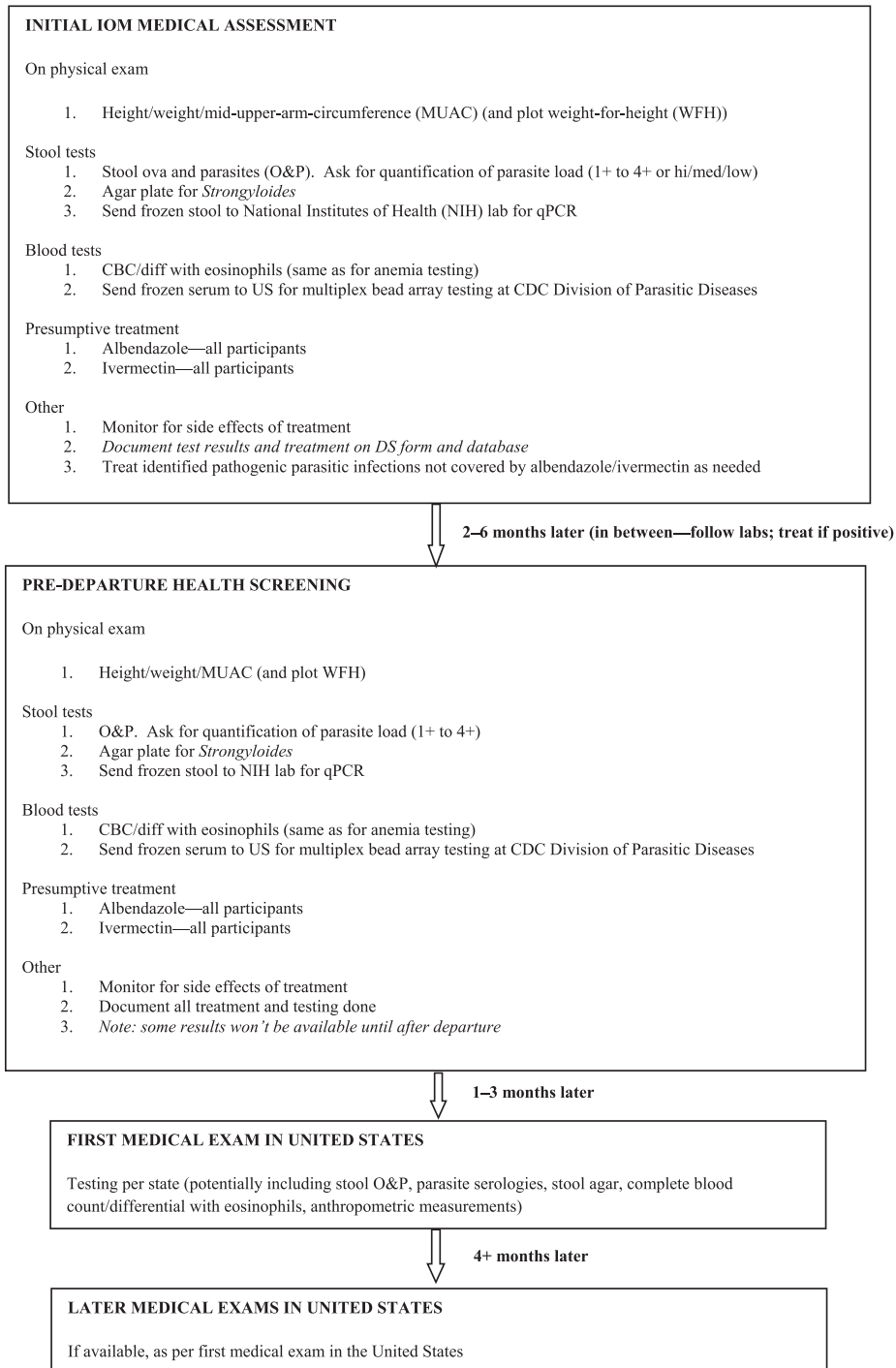


SUPPLEMENTAL FIGURE 1. Process and methods for screening and management of certain medical conditions among U.S.-bound refugees participating in a pilot evaluation project, Thailand–Burma border, July 2012–November 2013.



SUPPLEMENTAL FIGURE 2. Clinician guide for hepatitis B screening and management of U.S.-bound refugees participating in a pilot evaluation project, Thailand–Burma border, July 2012–November 2013.

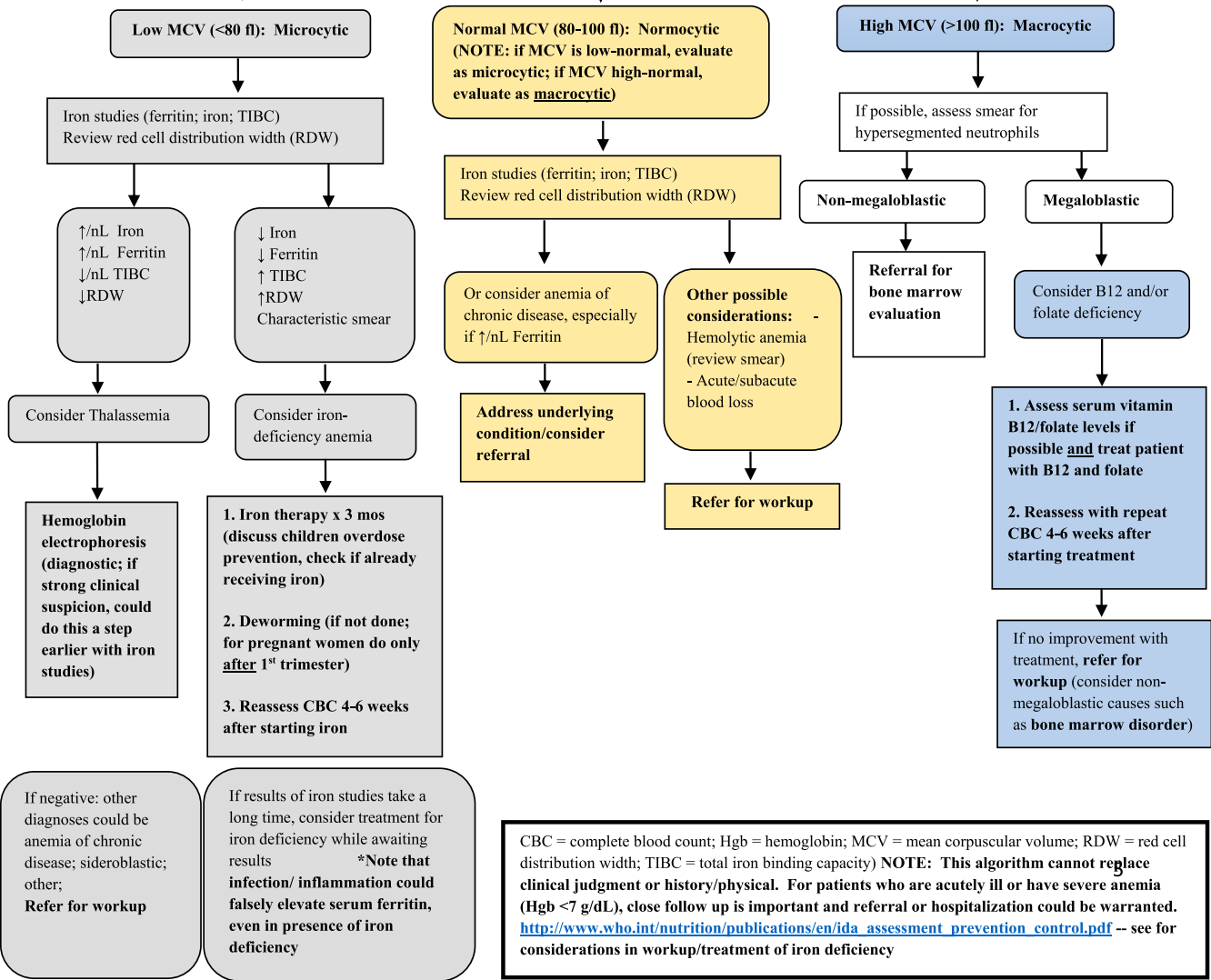


SUPPLEMENTAL FIGURE 3. Clinician guide for intestinal parasite testing and presumptive treatment of U.S.-bound refugees participating in a pilot evaluation project, Thailand–Burma border, July 2012–November 2013.

Anemia on HemoCue or CBC (complete blood count; *= priority groups for testing; also test other groups noted if feasible):

- *Child 6 mos-5 yrs: Hgb < 11.0 g/dL*
- Child 5-11 yrs: Hgb < 12.0 g/dL
- *Adolescent girl 12-19 yrs: Hgb < 12.0 g/dL*
- *Pregnant woman/pregnant adolescent: Hgb < 11.0 g/dL*
- Adult woman: Hgb < 12.0 g/dL
- Adolescent/adult man: Hgb < 13.0 g/dL

- Complete blood count (CBC) with differential and red-cell indices
 - Peripheral blood smear (if available/reliable)
 - Malaria rapid test AND smear if fever or otherwise clinically indicated (screen anyone with signs/symptoms of malaria whether or not anemic)



CBC = complete blood count; Hgb = hemoglobin; MCV = mean corpuscular volume; RDW = red cell distribution width; TIBC = total iron binding capacity) NOTE: This algorithm cannot replace clinical judgment or history/physical. For patients who are acutely ill or have severe anemia (Hgb <7 g/dL), close follow up is important and referral or hospitalization could be warranted. http://www.who.int/nutrition/publications/en/ida_assessment_prevention_control.pdf -- see for considerations in workup/treatment of iron deficiency

SUPPLEMENTAL FIGURE 4. Clinician guide for anemia diagnosis and management of U.S.-bound refugees participating in a pilot evaluation project, Thailand-Burma border, July 2012–November 2013.

SUPPLEMENTAL TABLE 1

Quantitative polymerase chain reaction methods to screen for intestinal parasites of U.S.-bound refugees participating in a pilot evaluation project, Thailand–Burma border, July 2012–November 2013; National Institutes of Health, Laboratory of Parasitic Diseases^{37–39}

| Organism | Target name | GenBank accession number | Forward primer | Reverse primer | FAM-labeled probe |
|---|-------------------------------|--------------------------|-------------------------------|---------------------------------|-------------------------------------|
| <i>Strongyloides stercoralis</i> | Dispersed repetitive sequence | AY028262.1 | CGCTCCAGAAATTAGTCCAGTT | GCAGCTTAGTCGAAAGCATAGA | 5'-ACAGTCTCCAGTTCACCTCCAGAAAGAGT-3' |
| <i>Trichuris trichiura</i> | Dispersed repetitive sequence | HG805809.1 | TTGCCTGTTGGGTGTATCTGTAA | TGCTCATCCATCCGGTTGGT | 5'-TAAACITTCAAAAATGCCCC-3' |
| <i>Necator americanus</i> | Hypothetical protein | ANCG01056619.1 | CCAGAAATGCCACACAAATTGTAT | GGGTTTGAGGCTTATCATAAAGAA | 5'-CCCGATTGAGCTGAAATGTCAAAA-3' |
| <i>Ancylostoma duodenale</i> and <i>cylicanicum</i> | ITS2 | EU344797.1 | GAATGACAGCAAACCTCGTTGTTG | ATACTAGCCACTGCCGAAACGT | 5'-ATCGTTTACCGACTTTTAG-3' |
| <i>Ascaris lumbricooides</i> | ITS1 and 5.8S | HQ721819.1 | GTAATAGCAGTCGGCGGTTTCTT | GCCCAACATGCCACCTATTCC | 5'-TTGGCGGACAAATTCATGCGGAT-3' |
| <i>Cryptosporidium parvum/hominis</i> | DNA J-like protein | XM_625506.1 | AAC TTC ACG TGT GTT TGC CAA T | CCA ATC ACA GAA TCA TCA GAA TCG | 5'-CATATGAAGTTATAGGGATACCAG3' |
| <i>Giardia lamblia</i> | 16S rRNA | AJ293299.1 | CATGCATGCCCGCTCA | AGCGGTGTCGGGTAGC | 5'-AGGACAACGGTTGAC-3' |
| <i>Entamoeba histolytica</i> | 18S rRNA | X75434.1 | GTTTGATTAGTACAAAAATGGCCAATTC | TCGTGGCATCCTAACTCACTTAGA | 5'-CAATGAAATGAGAAAATACA-3' |

SUPPLEMENTAL REFERENCES

37. Pilotte N, Papaikovou M, Grant JR, Bierwert LA, Llewellyn S, McCarthy JS, Williams SA, 2016. Improved PCR-based detection of soil transmitted helminth infections using a next-generation sequencing approach to assay design. *PLoS Negl Trop Dis* 10: e0004578.
38. Basuni M, Muhi J, Othman N, Verweij JJ, Ahmad M, Miswan N, Rahumatullah A, Aziz FA, Zainudin NS, Noordin R, 2011. A pentaplex real-time polymerase chain reaction assay for detection of four species of soil-transmitted helminths. *Am J Trop Med Hyg* 84: 338–343.
39. Mejia R, Vicuña Y, Broncano N, Sandoval C, Vaca M, Chico M, Cooper PJ, Nutman TB, 2013. A novel, multi-parallel, real-time polymerase chain reaction approach for eight gastrointestinal parasites provides improved diagnostic capabilities to resource-limited at-risk populations. *Am J Trop Med Hyg* 88: 1041–1047.
40. World Health Organization, 2017. *Child Growth Standards*. Available at: http://www.who.int/childgrowth/standards/technical_report/en/. Accessed June 5, 2017.
41. United Nations Children's Fund (UNICEF), 2011. *Nutrition in Emergencies*. Available at: <http://www.unicef.org/nutrition/training/index.html>. Accessed June 5, 2017.
42. Centers for Disease Control and Prevention (CDC), 2002. *2000 CDC Growth Charts for the United States: Methods and Development*. Available at: https://www.cdc.gov/nchs/data/series/sr_11/sr11_246.pdf. Accessed June 5, 2017.

SUPPLEMENTAL TABLE 2

Anthropometric measurements used to define malnutrition in U.S.-bound refugees participating in a pilot evaluation project, Thailand–Burma border, July 2012–November 2013

| Age group | Anthropometric measurement | Moderate acute malnutrition (wasting) | Severe acute malnutrition (wasting) | Moderate chronic malnutrition (stunting) | Severe chronic malnutrition (stunting) | Units of measurement |
|-------------------|-----------------------------|---------------------------------------|-------------------------------------|--|--|--------------------------|
| 6–59 months | Weight-for-height Z-score | ≥ -3 SD and < -2 SD | < -3 SD | – | – | kg = kilograms |
| 5–19 years | Body mass index Z-score | ≥ -3 SD and < -2 SD | < -3 SD | – | – | m = meters |
| 6 months–19 years | Height-for-age Z-score | – | – | ≥ -3 SD & < -2 SD | < -3 SD | mm = millimeters |
| ≥ 20 years | Body mass index | < 17 to ≥ 16 kg/m ² | < 16 kg/m ² | – | – | SD = standard deviations |
| Pregnant women | Mid upper arm circumference | ≥ 214 mm and ≤ 221 mm | < 214 mm | – | – | – |
| Any age | – | – | Bilateral edema | – | – | – |

For children and pregnant women, based on World Health Organization and United Nations International Children's Emergency Fund standards.^{40,41} For adults, based on National Center for Health Statistics standards.⁴²